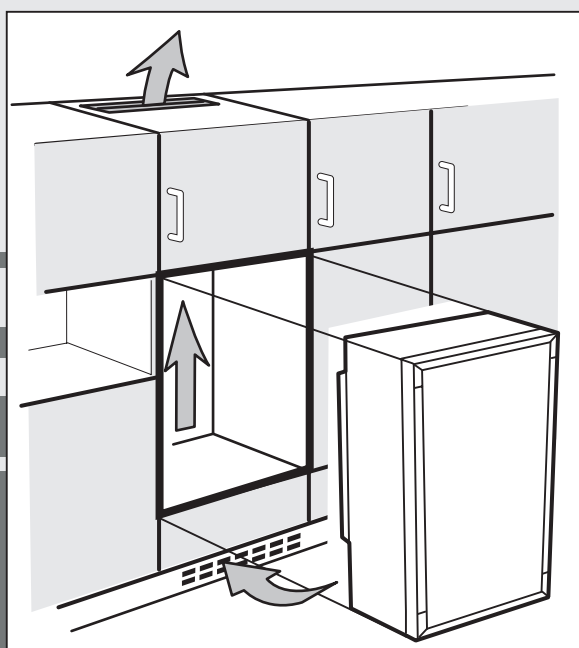


Installation instructions

for refrigerator-freezers, built-in flush
with decor frame

GB



7085 134-00

EK/EKB/EG 2611

LIEBHERR

Installation instructions

Keep the installation instructions in a safe place and pass them on to the next owner of your appliance where applicable.

The operating instructions apply to several models. Differences may therefore occur.

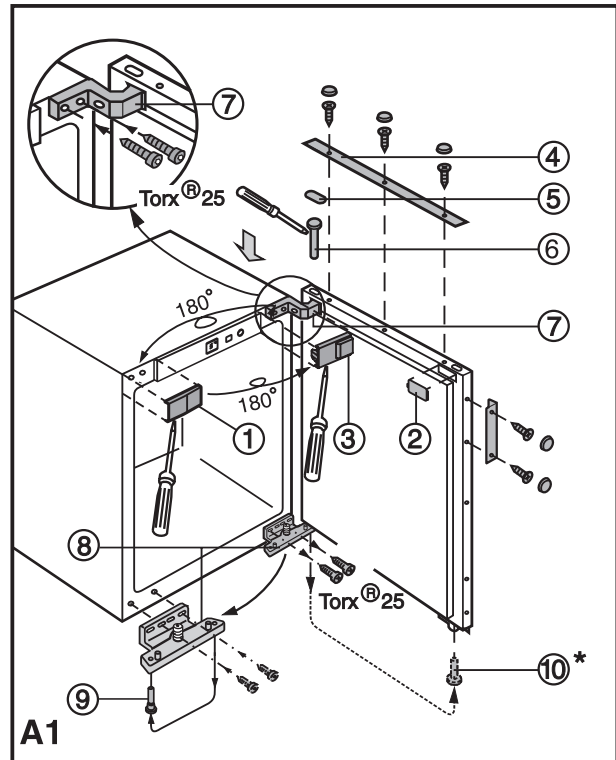
- Only use the appliance when it is installed.

You additionally require the following tool for installation: crosstip and Torx® screwdriver, 10, 15, 25, 30

Changing over door hinges

Fig. A1: The door hinges can be changed from one side to the other if need be. Otherwise continue from "Installation information", fig. B.

- Fig. A1: Lift off cover parts ①, ② and ③ in a forward direction.
- Unscrew decor frame ④. Using a screwdriver, lift out cover plate ⑤ and hinge pin ⑥.
- Open the door to an angle of about 45°, then tilt forwards until the hinge ⑦ is completely free and lift off.
- If the appliance has a freezer compartment, now change the compartment door. (see "Changing the compartment door")
- Transfer the hinge ⑧ to the other side (screw in through the second and fourth holes from the outside, using short metric screws).
- Transfer the hinge pin ⑨ to the other side.
- Check whether there is a white plastic sleeve ⑩ in the door bearing on the opposite side. If not*: Draw the out of the door bearing and insert it snugly at the opposite side.
- Rotate the hinge ⑦ by 180° and transfer to the other side. Knock the hinge in from the side!
- Replace the door on the hinge pin ⑨ at the bottom, guide it across the hinge ⑦ at the top and insert hinge pin ⑥.
- **Important - Replace the cover plate ⑤!**
- Screw down decor frame ④. **Mount decor panel** (if any, see below). Fit handle (occlude any holes used with stoppers).
- Rotate cover parts through 180° and re-attach them to the other side, ①, ② and ③.



WARNING

Risk of injury if the door tips!

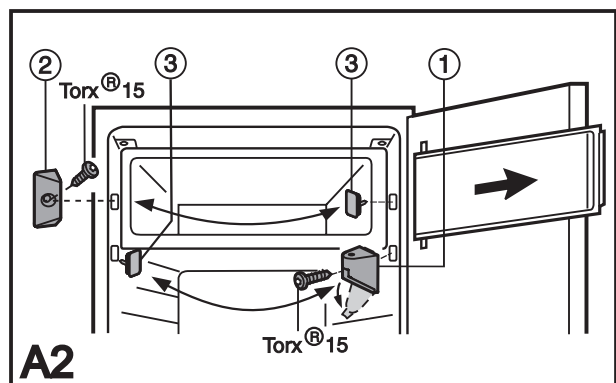


If the bearing parts have not been sufficiently tightened the door can tip outwards. In addition the door may not close, meaning that the appliance does not cool properly.

- Screw on the bearing brackets/bearing pins tightly **4 Nm**.
- Check all of the screws and retighten if necessary.

Changing the compartment door*

- Fig. A2: At the hinge ① fold away the cover. Unscrew the hinge ① and remove the compartment door with the hinge.
- Unscrew the closure ②.
- Close the holes with the plugs ③.
- Rotate the door and closure by 180° and replace on the other side: Insert the compartment door at the top, put the hinge ① in place at the bottom, screw down again and close the cover.



Installation instructions

Decor panel assembly

For appliances with decor frames, fig. B:

The front of your appliance can be colour-matched or contrasted with other components of a fitted kitchen through the attachment of a decor panel and frame.

The following table shows the panel dimensions for your appliance:

Appliance for recess height	Decor panel dimensions (mm)		
	height	width	max. thickness
874 - 880	860	585	4
1220 - 1226	1206	585	4

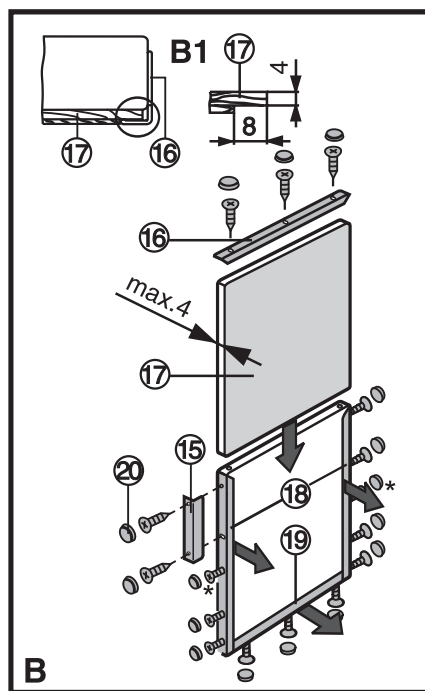
- Graduate thicker decor panels according to fig. B1.

⑩ Decor frame

⑪ Decor panel

Assembly

- Unscrew decor frame ⑩.
- Loosen decor frames ⑩/⑪ and slide forwards.
- Slide in decor panel ⑪.
- Slide all decor frames back and screw tight. Attach handle ⑮ at required height (top or bottom).
- Cover screw heads with cover caps ⑯



Equaliser trims for replacement appliances

For appliances with decor frames, fig. C.

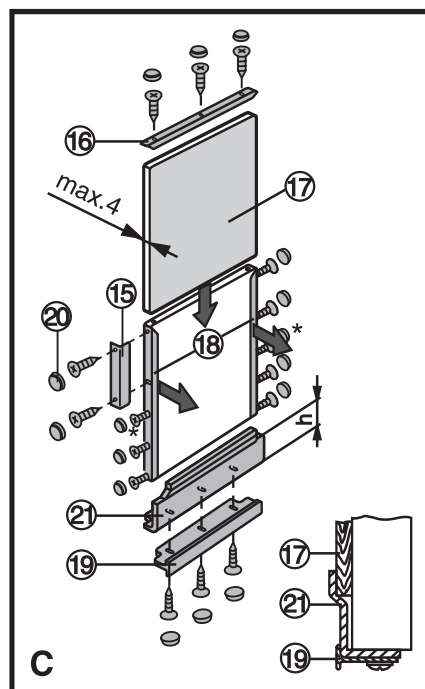
If the existing decor panel on the replacement appliance is too short, you can adjust the height with equaliser trims available in different heights.

Depending on the additional height required, or for visual reasons, you can use either one or two equaliser trims (top and/or bottom). The equaliser trims are available in three different heights and colours (see table below) from your customer service point.

Equalisation height [mm]	Part no.:		
	brown	white	aluminium
16	9733032	9733035	9733050
41	9733033	9733036	9733051
60	9733034	9733037	9733052

Assembly

- Unscrew top and bottom decor frame ⑩/⑪. Just loosen the decor frames ⑩ at the side and push forwards.
- Slide in decor panel ⑪.
- Insert equaliser trims ⑳ at top and/or bottom.
- Place decor frames ⑩/⑪ over panel and screw tight with retaining screws.
- Cover screw heads with cover caps ⑯



Installation instructions

Installation information and dimensions

- Fig. D: Align the unit with a spirit level and an angle. If necessary, level out by building up from underneath. The shelf and side walls of the unit must be at right-angles to one another.
- Fit the refrigerator/freezer in stable kitchen units only.
- The following ventilation gaps must be observed:
 - The depth of the ventilation channel at the rear of the unit must be at least 38 mm.
 - There must be a ventilation space of at least 200 cm² underneath and at the top of the unit. The following principle applies: the greater the area the more economically the appliance will run.
- Check installation dimensions in accordance with fig. D: appliance height (carcass) **a**, door height **b**, recess height **c**.

WARNING

Risk of fire due to short circuit!

If the mains cable/connector of the appliance or of another appliance touch the rear of the appliance, the mains cable/connector may be damaged by the appliance vibrations, leading to a short circuit.

- Stand the appliance so that it is not touched by connectors or main cables.
- Do not plug the appliance or any others into sockets located near the rear of the appliance.

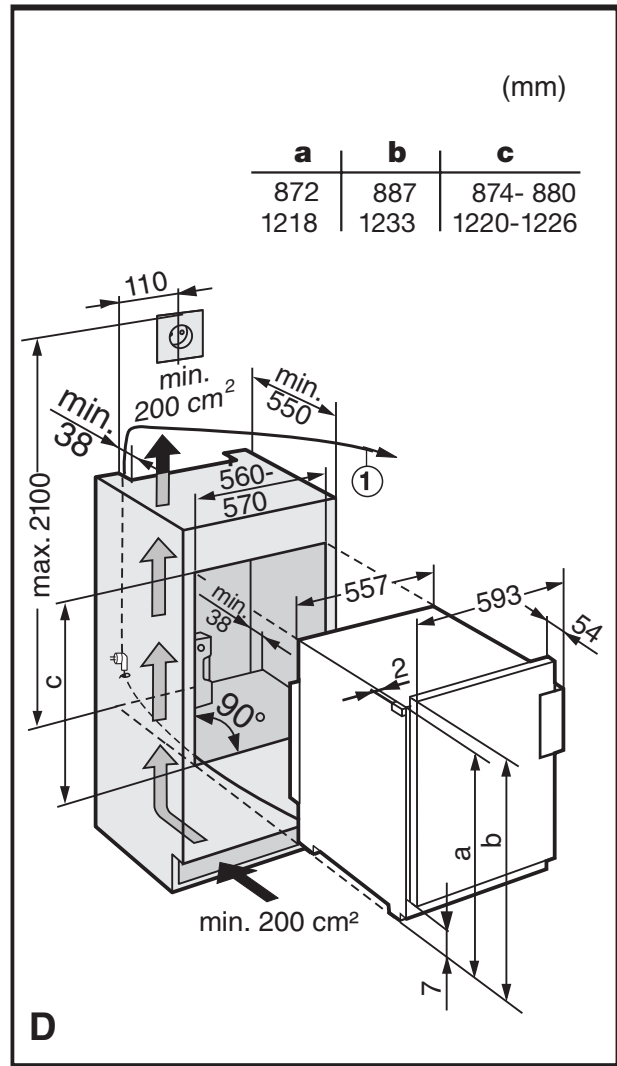


Connecting to the mains

Power supply (AC) and voltage

at the operating point must comply with the details on the type plate. It is located inside the appliance on the left-hand side.

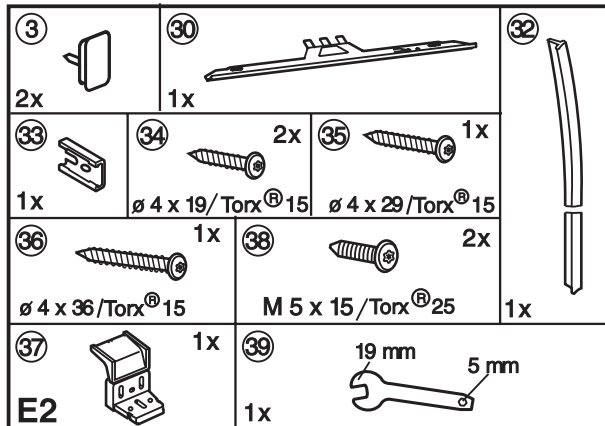
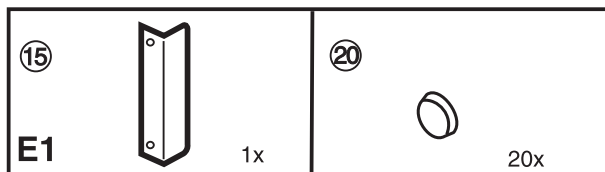
- The appliance must be connected with a properly installed fused socket.
- The fuse of the plug has to be 10A or more, it must be situated away from the rear area of the appliance and be easily accessible.
- Do not
 - connect to stand-alone inverters,
 - operate with so-called energy-saving plugs - this can damage the electronic system.
 - connect together with other appliances using an extension cable - danger of overheating.
- When removing the mains cable from the back of the appliance, remove the **cable holder** to prevent vibration noise.
- Route the mains cable with the aid of string ① in such a way that the appliance can be easily connected after installation, fig. D.



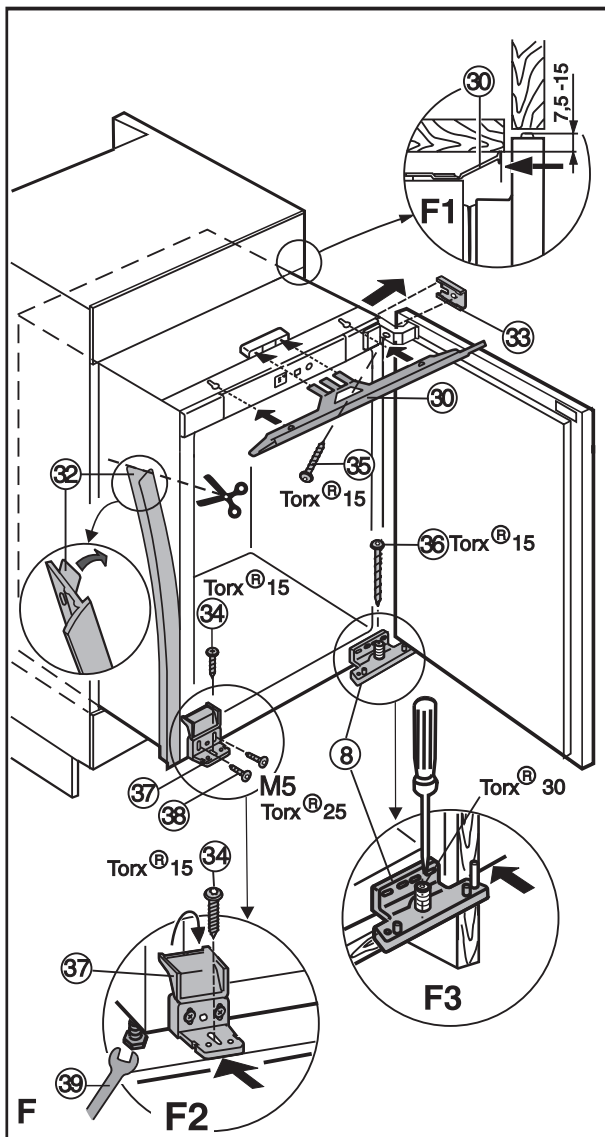
Installation instructions

Fastening in kitchen unit

- Fig. E1/2: All installation components are supplied.



- Slide appliance 3/4 of the way into the kitchen unit.
- Fig. F: slide equaliser trim ⑩ into the channel and engage it in the key holes.
- Stick sealing strip ⑫ onto the side of the appliance on the handle side flush with the front: remove the protective film and stick on; shorten to recess height if necessary.
- For 16 mm unit wall (568 mm recess): clip spacer ⑬ onto the hinge in the slot.
- For 19 mm unit wall (562 mm recess): the spacer is not needed.
- Slide appliance into the recess until the lower hinge ⑧ abuts the end face of the unit wall, fig. F3.
- Check the fit of the appliance and the door. Align if necessary, fig. F:
 - Using a spanner*, vertically align the appliance on the handle side by way of the adjustable foot* ⑲. Pay attention to the following:
 - The appliance has to be **tight-fitting** against the side wall at the top on the hinge side!
 - Align appliance on the hinge-side by way of the adjustable foot in the bearing block ③ using a Torx®30 screwdriver, Fig. F3.
 - Align the door so that it is in alignment with the surrounding unit doors by means of the elongated slots in the lower hinge ⑧.
- Screw plastic bracket ⑱ with M5 screws ⑳ onto the appliance at the handle side, fig. F, and align so it is **flush** with the front edge of the unit floor, fig. F2.
- Fasten/fix the appliance in the recess using chipboard screws ㉑/㉒/㉓: at the top through the bearing block, pressing the appliance firmly against the unit wall; at the bottom through the adjustable foot in the bearing support ③ and plastic bracket ⑱.
- If necessary, align the equaliser trim ⑩ by moving it parallel to the ceiling of the unit - it must not be proud, fig. F1.
- Pay attention that all the screws have a tight fit!



The manufacturer works constantly on the further development of all the types and models. Therefore please understand that we have to reserve the right to make design, equipment and technical modifications.

